



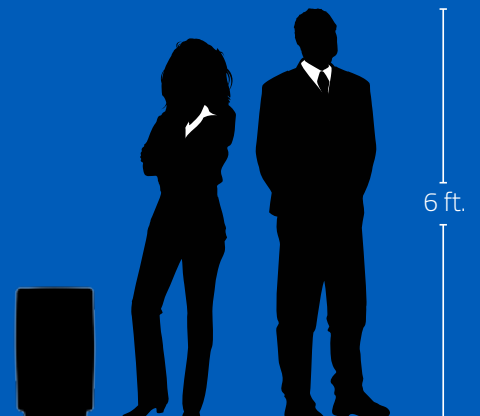
LIBERTY 2

Portable Sound System



Perfect for...

- Indoor & Outdoor Events
- Schools & Universities
- Military Training & Ceremonies
- Sporting Events
- Graduations
- Auditoriums
- Assemblies
- House of Worship
- Parks and Recreation
- Auctions
- Fitness Centers
- Parades & Community Celebrations
- Ceremonies
- Rental
- Public Gatherings
- Weddings
- and more!

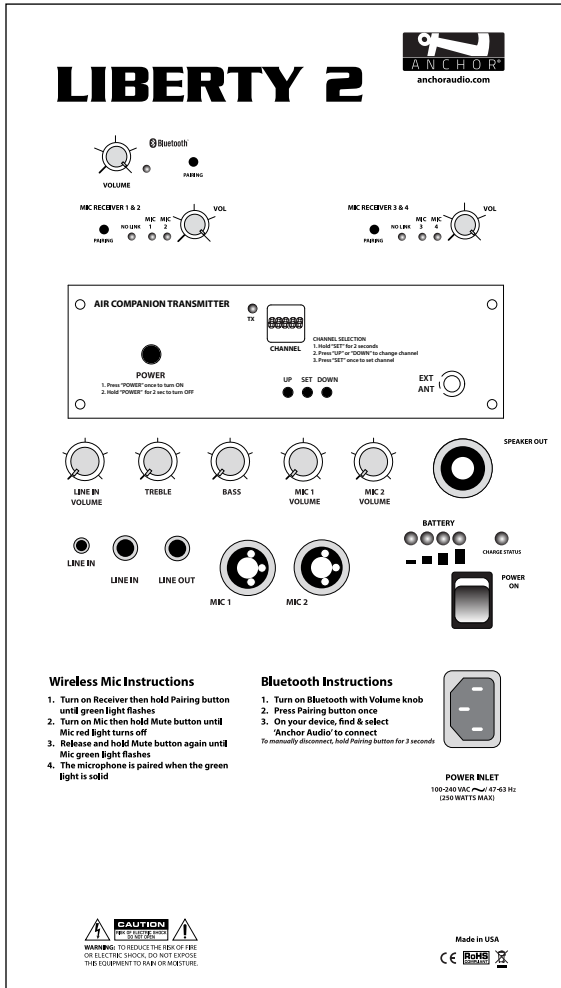


TECH SPECS

- 117 dB of clear sound
- 125W AC mode / 100W DC mode
- 1.9 GHz wireless frequency
- Two universal mic inputs
- 1/4" & 3.5 mm AUX line input
- 1/4" line output
- Built-in rechargeable Lithium Ion batteries
- One 10" woofer
- One ceramic compression driver
- External speaker output powers optional Liberty 2 companion speaker

FEATURES

- Reaches crowds up to 1,500+
- Connect up to four wireless mics
- Anchor AIR compatible
- Built-in Class 1 Bluetooth
- Built-in rechargeable batteries operate 6 - 8 hours on a single charge



(LIB2-XU4 Back Panel)

Liberty 2 Models

LIB2	Liberty with built-in Bluetooth
LIB2-U2	Liberty with built-in Bluetooth & dual wireless mic receiver
LIB2-U4	Liberty with built-in Bluetooth & two dual wireless mic receivers
LIB2-X	Liberty with built-in Bluetooth & AIR wireless transmitter
LIB2-XU2	Liberty with built-in Bluetooth, AIR wireless transmitter & dual wireless mic receiver
LIB2-XU4	Liberty with built-in Bluetooth, AIR wireless transmitter & two dual wireless mic receivers
LIB2-AIR	Liberty AIR wireless companion speaker
LIB2-COMP	Liberty unpowered wired companion speaker

Microphones

WH-LINK	Wireless handheld mic (1.9 GHz)
WB-LINK	Wireless belt pack transmitter (1.9 GHz)
HBM-LINK	Headband mic (3.5 mm plug)
CM-LINK	Collar mic (3.5 mm plug)
EM-LINK	UltraLite mic (3.5 mm plug)
LM-LINK	Lapel mic (3.5 mm plug)
MIC-90	Wired handheld mic with 20 ft. cable (XLR plug)

Technical Specifications

Rated Power Output	125 watts AC / 100 watts DC
Max SPL @ Rated Power	117 dB @ 1 meter
Frequency Response	60 Hz – 15 kHz ± 3dB
Microphone Wireless Frequency	1.9 GHz DECT
Microphone Wireless Range	300' + line of sight
Line Output (post fader)	Isolated, 600 W, 1/4" phone
Mic Inputs	Lo-Z (1 KW), balanced, XLR 12 VDC condenser mic (phantom) power Hi-Z (10 KW), unbalanced, 1/4" phone
Line Inputs	Stereo 3.5 mm, 1/4" balanced
AC Power Reqs.	100 – 240 VAC, 50/60 Hz, 250W max
Battery	Two 12V LFP rechargeable batteries, 7.0 AH
Dimensions (HWD)	23" x 14" x 11.5" (58.4 x 35.6 x 29.26 cm)
Weight	28 lbs / 12.7Kg
Warranty	6 years

Sensitivity For Rated Output

Lo-Z Microphone	-52 dBV (2.5 mVrms)
Hi-Z Microphone	-43 dBV (7.5 mVrms)
Auxiliary (line)	-14 dBV (200 mVrms)
Phantom Power	36V
Speaker Out	4-pole Neutrik Speakon® jack

LIB-AIR Technical Specifications

AIR Frequency Range	902 - 928 MHz
AIR Wireless Range	300' + line of sight
Speaker In	4-pole Neutrik Speakon® input



(Features & Specifications Subject to Change Without Notice)